



RFWORLD

Document Version: 1.35

Document No. 2008-0069-E6

Rping Group All Right reserved

WM2500TPA

User Manual

Shenzhen,China: RF WORLD (RPing Group)

15F,Nanshang Block,Zhongyin Bldg.,Caitian Rd.,Shenzhen 518026,China

Tel:86 755 82469767 82469790

Fax:86 755 82469915

Email: sales@mcurf.com www.mcurf.com



1: Brief Introduction.....	3
2. Pin Configuration.....	3
3. Operating Rang	3
4. Electrical Specification	4
5.PCB Layout of WM2500TPA	5
6. Customer service.....	5





1: Brief Introduction

The WM2500TPA Based on the Chipcon CC2500 radio transceiver chip. The designer can use this part as a drop-in subsystem component, and never has to care about things like impedance matching or soldering fine pitch devices.

The WM2500TPA added a PA t. The power of transmit is 14dbm, but there is no switch in this module, It only can be used as transmitter normally. WM2500S or WM2500 can be used as receiver.

Note: If WM2500TPA was used as receiver, the distant is very short.

2. Pin Configuration

Pin	Symbol	Function
1	VCC	RF module supply voltage
2	SI	serial configuration interface,data input
3	SCLK	serial configuration interface,clock output
4	SO	serial configuration interface,data output
5	GDO2	Clock output
6	GND	Grand
7	GDO0	serial output Rx data/serial input Tx data
8	CSn	serial configuration interface,chip select
9	PA-CL	PA Control , Active is High

3. Operating Rang

Parameters	Min	Max	Unit
Supply Voltage	3.0	3.6	V
Temperature ambient	-10	60	°C



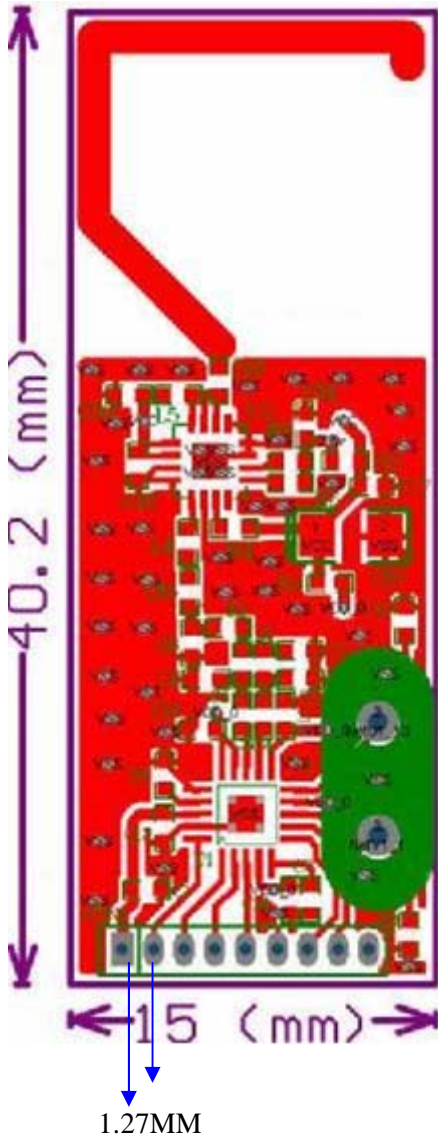
4. Electrical Specification

Tc=25°C ,RFMOD_VDD=3V if nothing else stated

NO	Parameters	Min	Typ	Max	Unit	Condition
1	Supply					
1.1	supply voltage	2.2		3.6	V	
2	Current consumption					
2.1	power down mode		50		uA	
2.2	Idle mode		4		mA	
2.3	Rx states		--		mA	No this function
2.4	Tx states		45		mA	
2.5	Voltage regulator current draw		10		uA	
3	Transmitter Part					
3.1	Tx data rate		250		Kbps	
3.2	Frequency range	2400		2483.5	MHz	
3.3	Output power		14		dBm	
3.4	Spurious emissions					
	25MHz-1GHz		-36		dBm	
	47-74,87.5-118,174-230,470-862MHz		-54		dBm	
	1800-1900MHz		-47		dBm	
	At 2-RF and 3-RF		-41		dBm	
	Otherwise above 1GHz		-30		dBm	



5. PCB Layout of WM2500TPA



Left Pin is the 1st pin

6. Customer service

We also provide BB (base band) chip to customer. It will be easy for customer to connect with UART Interface or other special function. Customer don't need to care anything for wireless with BB. For USB interface , the WM24USB_S can be provided.



RF WORLD

